

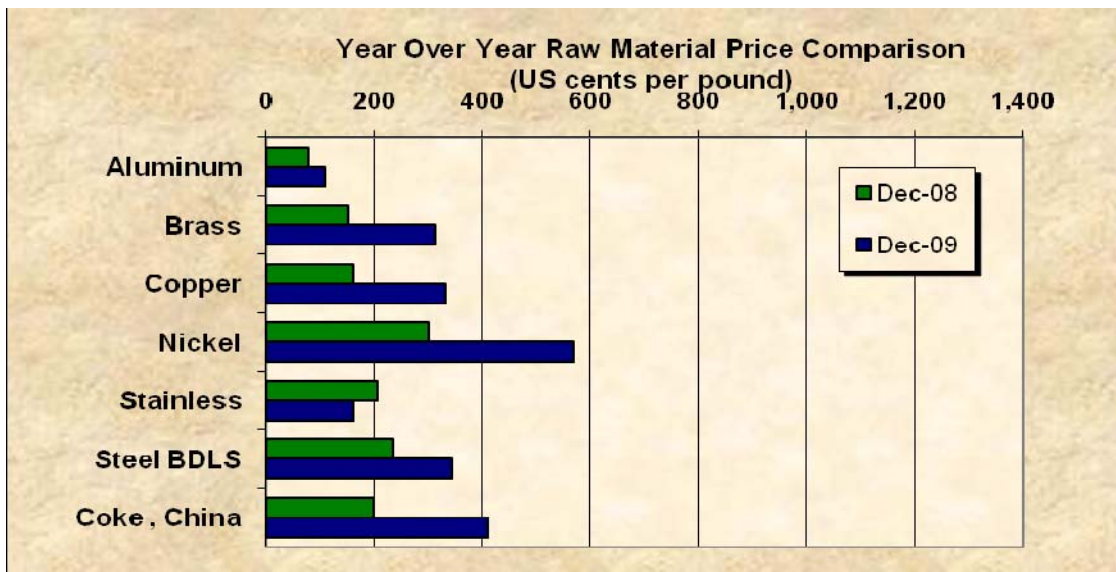


# Material Impacts On The Precision Machining Industry

December 2009 Final

## *Just Look At The Charts!*

### *Executive Summary*

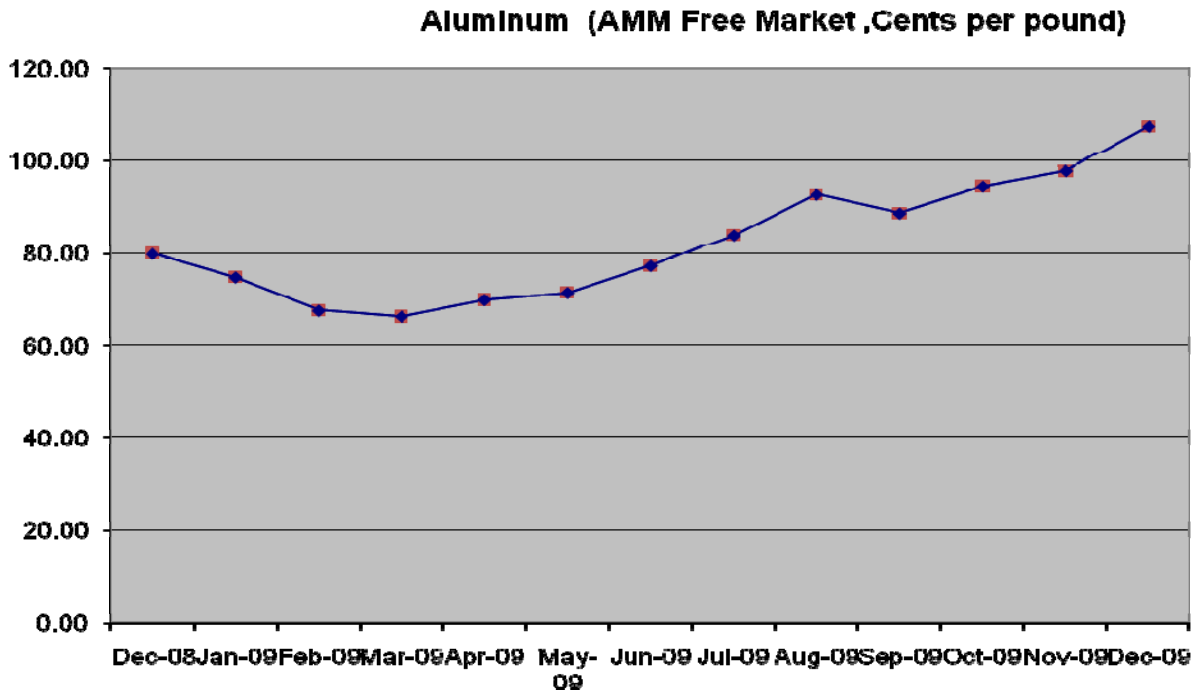


*Quick Summary: The prices of the raw materials that we track rose as follows this calendar year:*

- Aluminum: Up 44% from Dec 2008.*
- Copper, Up 112% from Dec 2008.*
- Nickel: Up 27% from Dec 2008.*
- Steel, Busheling: Up 35% from Dec 2008.*
- China Coke, Up 60% from Dec 2008.*

We expect to see continued increases as rate of growth in demand continues to outstrip the low inventory levels at suppliers. We believe that surcharges have become a permanent feature in the market for raw materials used in our industry. Shops offering fixed prices for their products do so at their own peril. We hear of “April” lead times being quoted for some steel items. The backlogs we hear about in steel lead us to believe that some tacit ‘allocation’ might be occurring. The Institute of Supply Management reports economic activity in the **manufacturing sector expanded** in December for the fifth consecutive month, and the **overall economy grew** for the eighth consecutive month. *Right on its heels due to low inventories- price increases for raw materials!* – Miles Free, Director Industry Research and Technology, PMPA

**Aluminum** (AMM Free Market cents per pound)



*Due to delisting of Aluminum from Comex last fall, we are now tracking the AMM Free market indicator.*

*Aluminum is back over a dollar per pound.*

Aluminum 2009	
Jan-09	74.80
Feb-09	67.75
Mar-09	66.50
Apr-09	70.00
May-09	71.50
Jun-09	77.25
Jul-09	84.00
Aug-09	92.75
Sep-09	88.75
Oct-09	94.48
Nov-09	97.81
Dec-09	107.62

December shipments of aluminum products from U.S. service centers totaled 79,100 tons, 16.5% lower than December 2008 shipments. Total U.S. service center aluminum shipments of 1.04 million

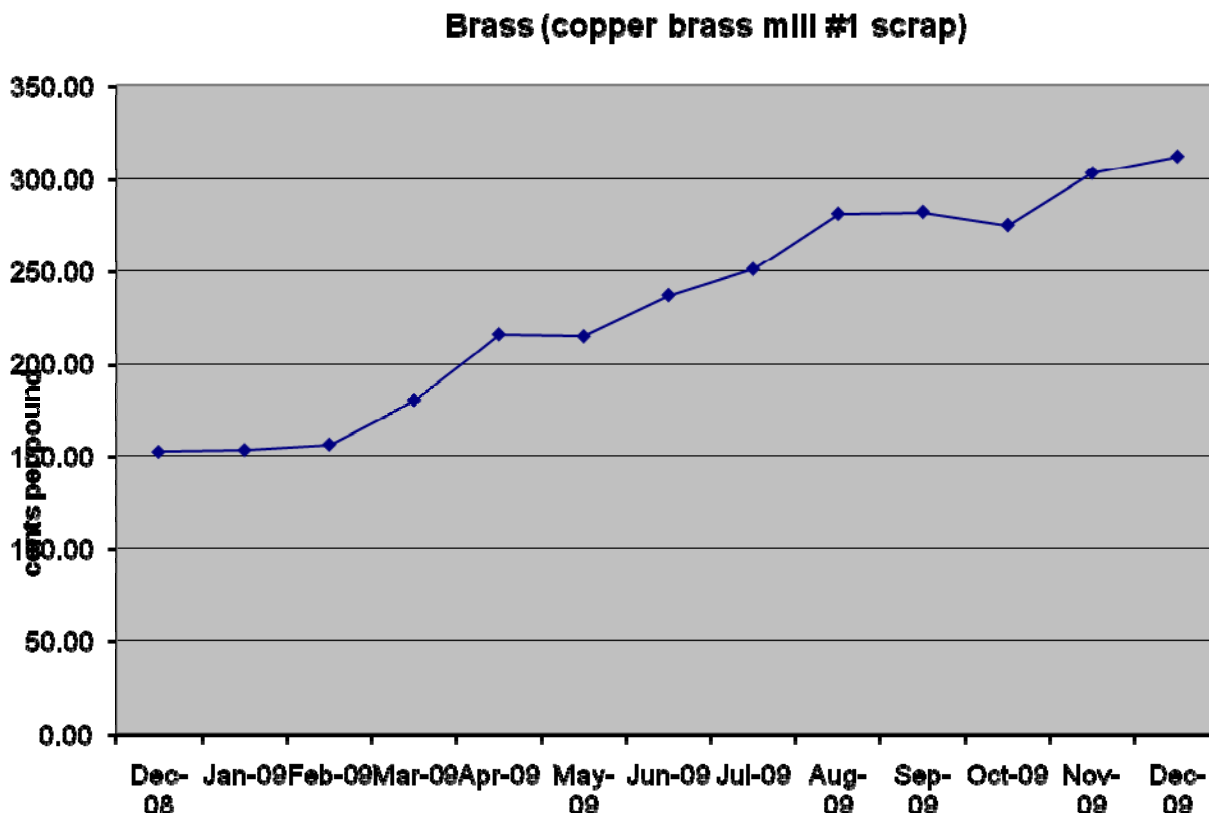
tons were 38.4% below 2008 volume. Aluminum inventories at the end of the year of 279,000 tons were 21.7% lower than a year ago and, at current shipping rates, equal to a 3.5-month supply.

In Canada, aluminum shipments from metals service centers totaled 7,700 tons in December, or 20.1% below year-ago volume. Canadian service centers shipped 125,500 tons of aluminum in 2009, a decline of 24.2% from 2008 shipments. The year-end inventory of aluminum products in Canada was 29,200 tons, 13.1% below a year ago and, at current shipping rates, equal to a 3.8-month supply. Source: <http://www.ism.ws/ismreport/mfgrob.cfm>

**Average price in 2008: \$1.27 per pound**

**Average price in 2009: \$.83 per pound**

**Copper and Brass** *(cents per pound Comex Cathode and cents per pound copper brass mill number 1)*



*Of course you knew this was happening!*

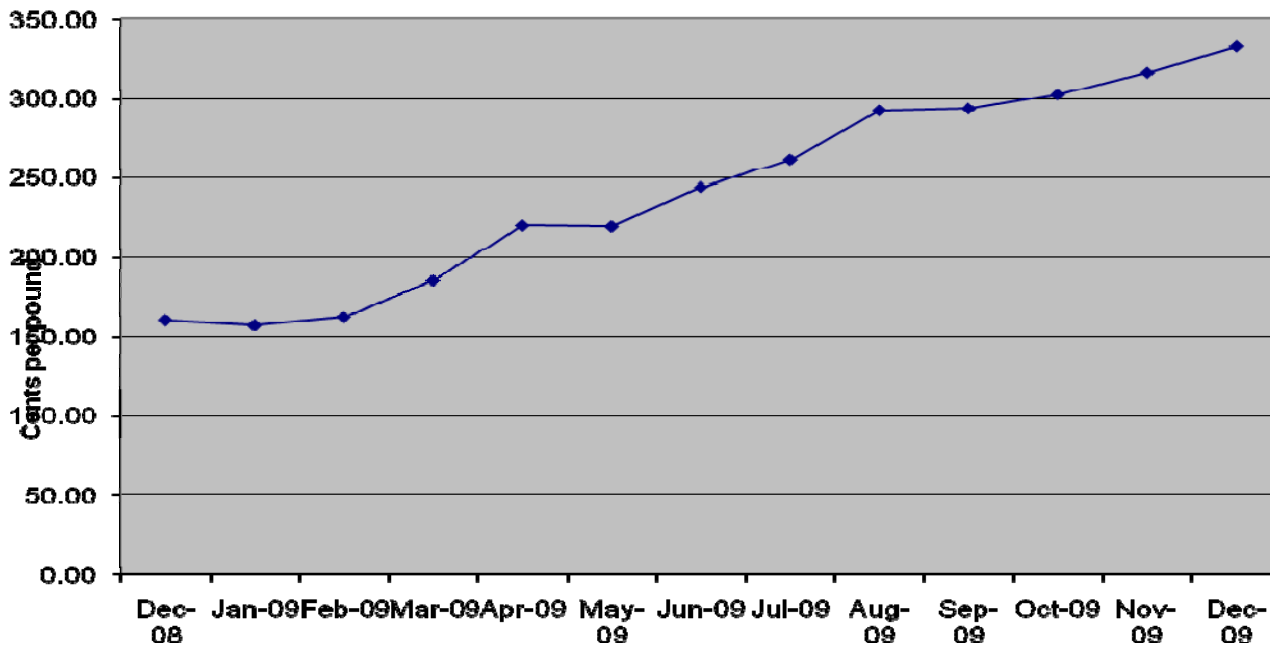
*Brass and Copper have doubled in a year, since January 2009.*

Brass	
Jan-09	153.00
Feb-09	156.00
Mar-09	180.00
Apr-09	216.00
May-09	215.00
Jun-09	237.00
Jul-09	251.00
Aug-09	281.00
Sep-09	282.00
Oct-09	275.00
Nov-09	303.00
Dec-09	312.00

Average Price in 2008 (cents per pound): 322.50

Average Price in 2009 (cents per pound): 238.42

**Copper (Comex High grade cathode spot close)**



Price decrease announced effective Jan 28, 2010. The Freight Fuel Surcharge up 3% to 27% over the standard freight rate.

Role of inventory on price: [https://www.chasebrass.com/company/index\\_surcharge.jsp](https://www.chasebrass.com/company/index_surcharge.jsp)

<b>Copper</b>	
<b>Jan-09</b>	157.20
<b>Feb-09</b>	162.25
<b>Mar-09</b>	184.95
<b>Apr-09</b>	220.35
<b>May-09</b>	219.75
<b>Jun-09</b>	243.80
<b>Jul-09</b>	261.65
<b>Aug-09</b>	292.30
<b>Sep-09</b>	293.45
<b>Oct-09</b>	302.65
<b>Nov-09</b>	316.60
<b>Dec-09</b>	332.75

*112% increase for the year.*

Copper prices are falling as I write this in late January. Most pundits attribute the decline to slowing demand in China due to economic policy tightening. Here in North America, sluggish home starts in the US are most frequently blamed. The link above showing role of inventories of metal vs. price is worth your attention.

China Imports of copper scrap in December 2009 were reported to be 440,000 tons copper, from January to December copper imports were 4 million tons, down 28.3%.

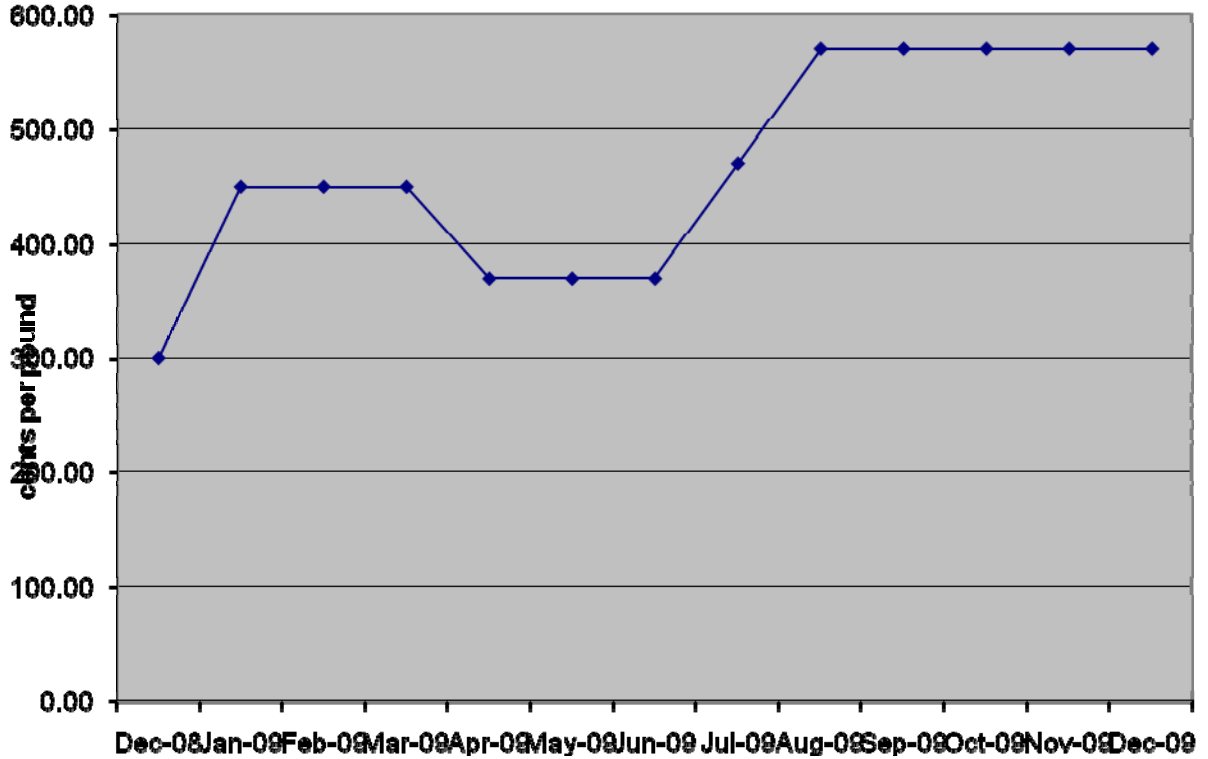
According to the International Study Group for Copper, in the first 10 months of 2009, world usage is estimated to have decreased by 1% compared with that in the same period of 2008. Chinese apparent usage, which accounted for 40 % of world usage over this period, grew by 1.8 Mt (43%) and nearly offset an 18% decline in the rest of the world. Usage in the EU-15 countries, Japan, and the United States, which combined accounted for about 29.5% of world usage, decreased by 21%, 31%, and 21%, respectively. [http://www.icsg.org/index.php?option=com\\_content&task=view&id=63&Itemid=64](http://www.icsg.org/index.php?option=com_content&task=view&id=63&Itemid=64)

**Average price in 2008** (*cents per pound*): **338.99 per pound.**

**Average price in 2009** (*cents per pound*): **248.98 per pound.**

**Nickel** *(cents per pound, New Clips and Solids Chicago)*

**Nickel scrap (new clips and solids)**



*Nickel Stable and selling well below 2008 average up 27% for the year..*

Nickel	
Jan-09	450.00
Feb-09	450.00
Mar-09	450.00
Apr-09	370.00
May-09	370.00
Jun-09	370.00
Jul-09	470.00
Aug-09	570.00
Sep-09	570.00
Oct-09	570.00
Nov-09	570.00
Dec-09	570.00

**Average price in 2008: \$7.83 per pound.**

**Average price in 2009: \$4.82 per pound.**

*(Nickel is a key component of many steel alloy systems, stainless steels, superalloys, and many other nickel base materials.)*

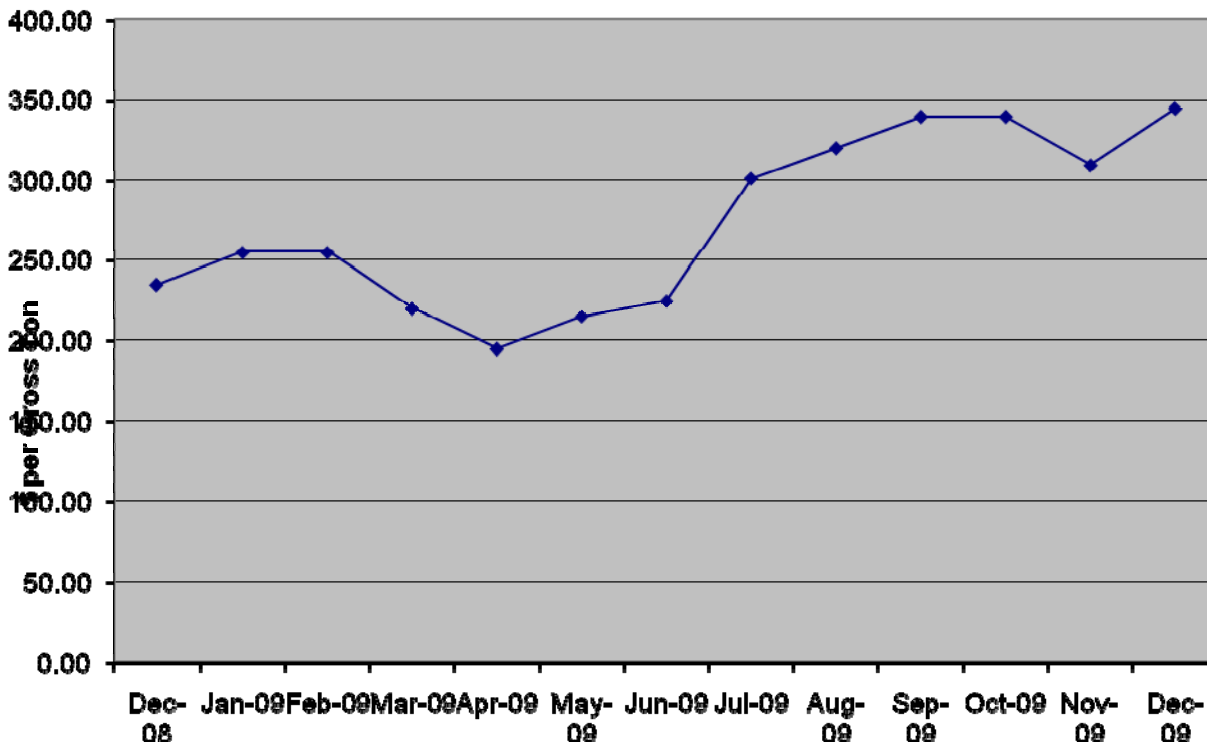
## Stainless

Stainless Surcharges: Smolz + Bickenbach USA Stainless 303 per pound *Raw Materials Surcharge*- December \$0.76;;  
 These are calculated on a two month lag.

We are seeing an increasing number of requests for assistance from shops trying to find various stainless steel bar items for machining in today's no-inventory environment..

**Steel** (dollars per gross ton, Number 1 Busheling composite, Chicago, Cleveland, and Pittsburgh)

### Steel Scrap (#1 Bushelling)



Surcharges					
	Scrap	Manganese	Alloy 41XX	Alloy 43XX	Alloy 86XX
December	\$5.00	\$0.18	\$2.72	\$13.84	\$5.70
January	\$11.60	\$0.42	\$2.37	\$11.47	\$4.77
February	\$13.60	\$0.36	\$2.44	\$12.98	\$5.26

*Steel busheling up 35% for the year.  
 January 1, 2010 Base price increase of \$2.00 cwt (plus applicable surcharges)*

December shipments of steel products from U.S. metals service centers totaled 2.24 million tons, a decline of just 5.5% compared with December 2008 volume. In all, 2009 steel product shipments totaled nearly 29.6 million tons, a year-over-year decline of 36.8%. Year-end steel inventories totaled 6.14 million tons, down 29.0% from the end of 2008. At current shipping rates, that stockpile equaled a 2.7-month supply.

Canadian service center steel shipments totaled 322,400 tons in December, identical to shipments in December 2009. Canadian steel shipments for all of 2009 were down 26.4%, to 4.92 million tons. Canadian service center steel inventories at the end of December were 1.04 million tons, or 10.5% lower than a year ago and equal, at current shipping rates, to a 3.2-month supply. <http://www.ssci.org/news/details.aspx?ArticleID=153>

<b>Busheling Composite</b>	
<b>Jan-09</b>	255.00
<b>Feb-09</b>	255.00
<b>Mar-09</b>	220.00
<b>Apr-09</b>	195.00
<b>May-09</b>	215.00
<b>Jun-09</b>	225.00
<b>Jul-09</b>	301.67
<b>Aug-09</b>	320.67
<b>Sep-09</b>	340.00
<b>Oct-09</b>	340.00
<b>Nov-09</b>	310.00
<b>Dec-09</b>	345.00

**Imports:** The AISI reports that Finished Steel imports were up 11% in December, but Declined 45% in 2009 vs 2008. 1,396,000 net tons of steel imported in December. Finished Steel imports for full year 2009 were 14.2 million net tons. Finished steel market penetration was 22% for the full year, comparable to 2007 levels.

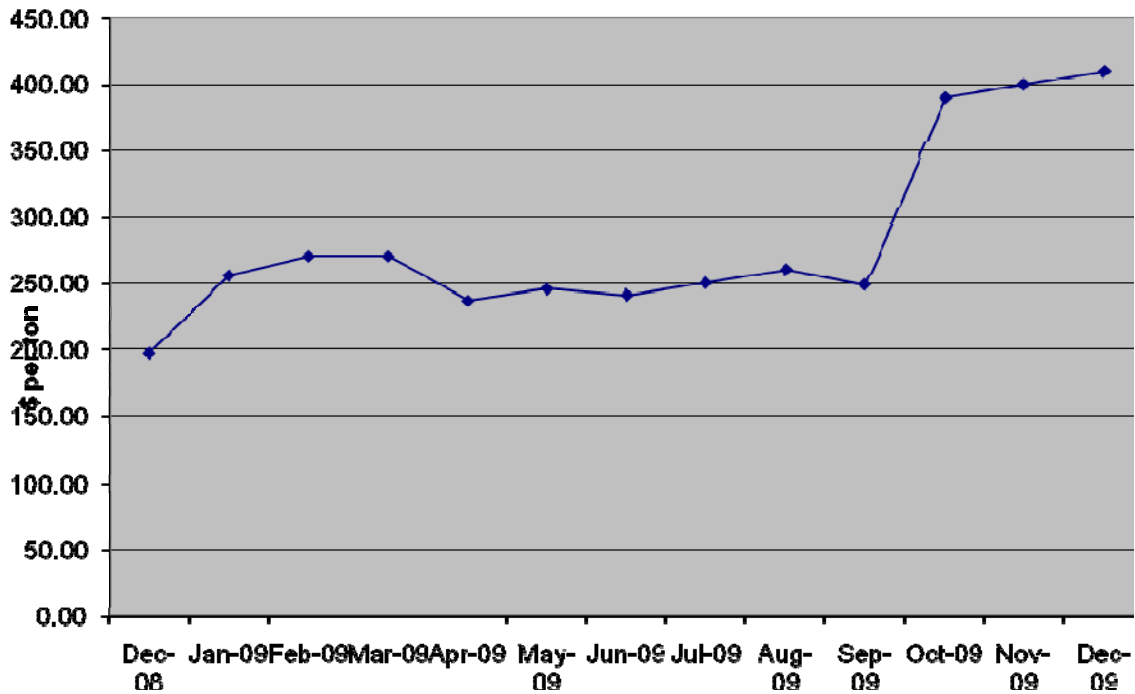
*Commentary: We have not learned of any BOF melt- bar capacity currently running in North America. Current high demand and very low inventories all along the supply chain rates will mean continued tight supplies and price squeeze. Findings of dumping against certain Chinese products will keep this market ‘interesting.’*

*Knowing where to find material is a key competitive advantage in today’s roller coaster market. PMPA members can take advantage of PMPA staff expertise, suppliers, and fellow members’ knowledge via member only Listserves to assure that material can be found when needed.*

**Average price in 2008: \$575.50 per gross ton**  
**Average price in 2009: \$276.66 per gross ton**

## China Coke (Chinese) (\$ per metric tonne)

### China Coke



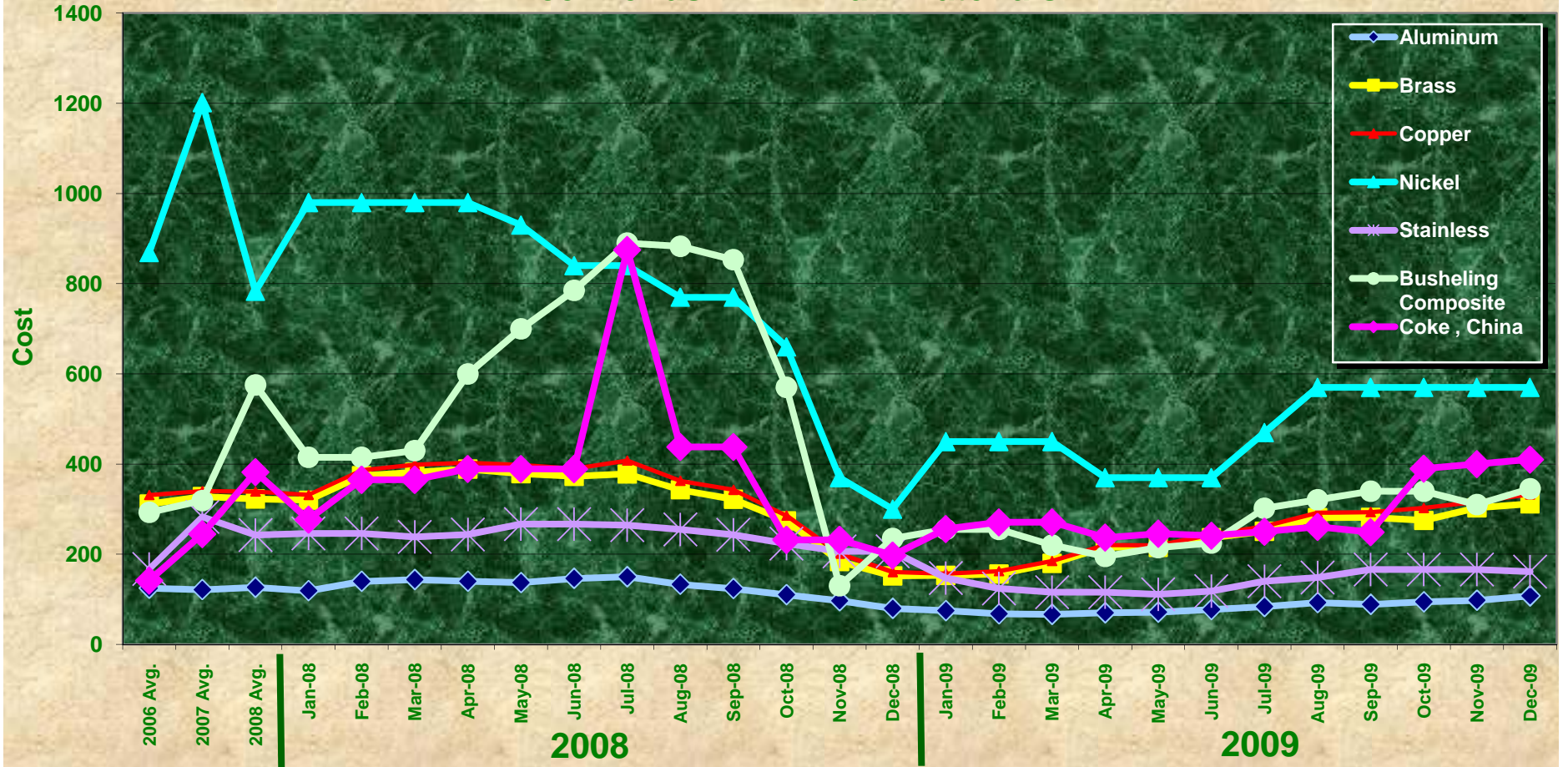
(Coke is used in blast furnaces to make hot metal iron for use in the basic oxygen steelmaking process. China accounts for half of the world's supply of coke, one third of which went to the European Union.)

*China coke is up 60% over Dec 2008.*

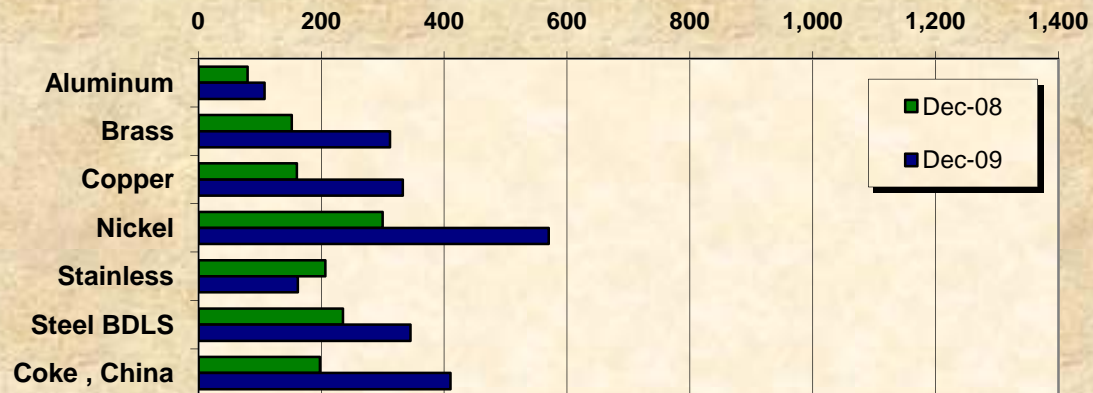
<b>Coke, China</b>	
<b>Jan-09</b>	256.00
<b>Feb-09</b>	270.80
<b>Mar-09</b>	270.80
<b>Apr-09</b>	236.93
<b>May-09</b>	245.71
<b>Jun-09</b>	241.22
<b>Jul-09</b>	250.24
<b>Aug-09</b>	260.73
<b>Sep-09</b>	249.01
<b>Oct-09</b>	390.00
<b>Nov-09</b>	400.00
<b>Dec-09</b>	410.00

**Average price in 2008: \$382.34 per tonne.**  
**Average price in 2009: \$290.12 per tonne.**

## Price Trends PMPA Raw Materials



## Year Over Year Raw Material Price Comparison



## PMPA Raw Materials Index

	Aluminum	Brass	Copper	Nickel	Stainless	Busheling Composite	Coke , China
<b>2006 Avg.</b>	124.62	311.58	331.19	869.17	167.50	293.25	141.75
<b>2007 Avg.</b>	121.49	328.17	339.86	1201.67	282.65	319.17	244.75
<b>2008 Avg.</b>	126.64	322.50	338.99	783.33	242.43	575.50	382.34
<b>Jan-08</b>	119.00	320.00	331.70	980.00	246.06	415.00	277.00
<b>Feb-08</b>	139.75	374.00	386.35	980.00	246.06	415.00	365.30
<b>Mar-08</b>	143.75	382.00	398.95	980.00	238.62	430.00	365.30
<b>Apr-08</b>	140.00	389.00	402.80	980.00	244.09	600.00	389.40
<b>May-08</b>	137.00	379.00	397.85	930.00	267.10	700.00	389.40
<b>Jun-08</b>	146.30	373.00	389.55	840.00	267.10	785.00	389.00
<b>Jul-08</b>	150.00	378.00	407.75	840.00	264.47	890.00	875.00
<b>Aug-08</b>	133.25	343.00	362.85	770.00	255.35	883.00	438.07
<b>Sep-08</b>	123.75	322.00	342.95	770.00	243.21	853.00	438.07
<b>Oct-08</b>	110.25	274.00	285.70	660.00	223.94	570.00	232.00
<b>Nov-08</b>	96.75	184.00	201.10	370.00	206.58	130.00	232.00
<b>Dec-08</b>	79.85	152.00	160.35	300.00	206.58	235.00	197.50
<b>Jan-09</b>	74.80	153.00	157.20	450.00	147.00	255.00	256.00
<b>Feb-09</b>	67.75	156.00	162.25	450.00	124.00	255.00	270.80
<b>Mar-09</b>	66.50	180.00	184.95	450.00	116.00	220.00	270.80
<b>Apr-09</b>	70.00	216.00	220.35	370.00	116.00	195.00	236.93
<b>May-09</b>	71.50	215.00	219.75	370.00	110.90	215.00	245.71
<b>Jun-09</b>	77.25	237.00	243.80	370.00	118.00	225.00	241.22
<b>Jul-09</b>	84.00	251.00	261.65	470.00	140.00	301.67	250.24
<b>Aug-09</b>	92.75	281.00	292.30	570.00	148.50	320.67	260.73
<b>Sep-09</b>	88.75	282.00	293.45	570.00	166.50	340.00	249.01
<b>Oct-09</b>	94.48	275.00	302.65	570.00	166.50	340.00	390.00
<b>Nov-09</b>	97.81	303.00	316.60	570.00	166.50	310.00	400.00
<b>Dec-09</b>	107.62	312.00	332.75	570.00	161.50	345.00	410.00
Jan09- Jan 08	<b>-44.20</b>	<b>-167.00</b>	<b>-174.50</b>	<b>-530.00</b>	<b>-99.06</b>	<b>-160.00</b>	<b>-21.00</b>
\$Change							
Jan09-Jan08	<b>-37.14</b>	<b>-52.19</b>	<b>-52.61</b>	<b>-54.08</b>	<b>-40.26</b>	<b>-38.55</b>	<b>-7.58</b>
%Change							
Dec 09- Jan 09	<b>32.82</b>	<b>159.00</b>	<b>175.55</b>	<b>120.00</b>	<b>14.50</b>	<b>90.00</b>	<b>154.00</b>
\$Change							
Dec 09-Jan09	<b>43.88</b>	<b>103.92</b>	<b>111.67</b>	<b>26.67</b>	<b>9.86</b>	<b>35.29</b>	<b>60.16</b>
%Change							
2008 Average	<b>126.64</b>	<b>322.50</b>	<b>338.99</b>	<b>783.33</b>	<b>242.43</b>	<b>575.50</b>	<b>382.34</b>

## PMPA Raw Materials Index

Prices are as published, do not include surcharges.

**Aluminum**, Amm Free Market after September 2009, cents/pc

**Brass Scrap**, Copper Brass mill #1, cents/pound

**Copper**, Comex High Grade Cathode, cents/pound

**Nickel**, Scrap clips and solids, cents per pound

**Stainless**, 303 CD bars, cents/pound

**Steel Busheling, #1**, AMM Composite, \$/gross Ton

**Coke**- anecdotal press reports

### ***About the commodities selected for tracking:***

The items selected were chosen as indicators of costs for the materials commonly used by our industry.

They were selected because they were available and published, rather than a transaction price which might be confounded with other commercial objectives or geographic market peculiarities.

**Aluminum**- Delisted on Comex in September 2009, AMM Free Market price thereafter.

**Brass Scrap, Copper Brass mill, #1** was chosen as indicative of the general trend for high quality Brass Scrap for recycling.

**Copper, Comex High Grade Cathode** was chosen as indicative of costs for "new Copper" to be added to the existing Brass Metal inventory available.

**Nickel, Scrap clips and solids** was chosen as a proxy indicator for understanding Stainless Steel and High Temp alloys which typically are high % Nickel content. (303-8-10%; 316 10-12%; Hastelloy- Greater than 50%)

**Stainless**- 303 bars this number is published but we do not see it as realistic and provide it strictly for information.

**Steel- Busheling Composite**. This indicator was selected as it correlated to the #1 bundles we used prior, now obsolete. It is a factor in the determination of most mill surcharges.

**Coke**- Coke is used in blast furnace production of Iron in order to produce steel by the Basic Oxygen Process (BOP). Blast furnaces use the coke to provide support for the burden (iron ore, limestone, bushellings, sinter etc.), sensible heat, and carbon monoxide reactant to reduce the oxide in the ore to pure iron. Coke itself is produced by blending a mixture of low- and high- volatility and ash coals and processing them at very high temperatures to distill out volatile organics leaving a strong porous cellular solid which is the critical ingredient for the Blast furnace- BOP producer. This process is daunting from an environmental impact point of view. ***Without coke, there is no blast furnace iron; Without blast furnace iron, there is no BOP steel.***

***Quarterly averages have been calculated and used for this report for years prior to 2005 in order to tidy up the presentation of data.***

Miles Free

**Quarterly Averages  
PMPA Material Impacts**

	Aluminum	Brass	Copper	Nickel	Stainless	Steel BDLS	Coke , China
<b>2003</b>	65.60	77.50	78.21	310.23	111.00	114.55	
	65.84	79.48	80.15	312.50	105.00	124.05	
	66.77	81.93	82.02	325.12	102.00	131.00	
<b>3rd Qtr.</b>	66.07	79.64	80.13	315.95	106.00	123.20	
	69.79	87.04	88.20	359.67	102.00	132.00	
	70.67	92.22	92.76	419.72	105.33	145.33	
	73.52	98.76	99.67	452.50	106.00	162.43	
<b>4th Qtr.</b>	71.33	92.67	93.54	410.63	104.44	146.59	
<b>2004</b>	76.29	108.80	110.28	562.50	106.00	182.00	
	80.40	120.00	121.60	565.00	106.00	275.00	182.00
	84.65	137.00	139.70	525.00	121.50	295.00	460.00
<b>1st Qtr.</b>	80.45	121.93	123.86	550.83	111.17	250.67	321.00
	88.65	136.00	137.10	500.00	121.50	270.00	450.00
	80.85	123.50	124.70	425.00	121.50	240.00	410.00
	83.45	128.00	129.25	500.00	121.50	250.00	325.00
<b>2nd Qtr.</b>	84.32	129.17	130.35	475.00	121.50	253.33	395.00
	84.30	130.00	131.30	550.00	121.50	395.00	
	84.30	131.00	131.55	520.00	121.50	395.00	
	90.95	135.00	139.90	520.00	153.50	375.00	310.5
<b>3rd Qtr.</b>	86.52	132.00	134.25	530.00	132.17	388.33	310.50
	91.30	142.00	147.35	600.00	157.00	415.00	239.00
	89.45	140.00	144.50	500.00	157.00	430.00	239.00
	94.25	145.00	149.10	500.00	157.00	430.00	280.00
<b>4th Qtr.</b>	91.67	142.33	146.98	533.33	157.00	425.00	252.67
<b>2005</b>	93.60	145.00	149.50	500.00	157.00	370.00	280.00
	95.05	144.00	150.25	550.00	157.00	315.00	230.00
	96.65	146.00	151.05	550.00	157.00	255.00	230.00
<b>1st Qtr.</b>	95.10	145.00	150.27	533.33	157.00	313.33	246.67
	93.50	149.00	154.20	600.00	157.00	270.00	230.00
	85.50	144.00	161.40	650.00	160.00	215.00	230.00
	80.25	149.00	153.00	650.00	160.00	145.00	210.00
<b>2nd Qtr.</b>	86.42	147.33	156.20	633.33	159.00	210.00	223.33
	84.40	153.00	163.00	560.00	160.00	170.00	210.00
	89.80	168.00	177.95	540.00	160.00	230.00	210.00
	89.00	173.00	187.65	540.00	160.00	285.00	210.00
<b>3rd Qtr.</b>	87.73	164.67	176.20	546.67	160.00	228.33	210.00
	91.90	181.00	196.80	520.00	166.00	235.00	185.00
	101.55	193.00	218.00	480.00	166.00	285.00	130.00
	105.10	208.00	228.00	500.00	166.00	280.00	150.00
<b>4th Qtr.</b>	99.52	194.00	214.27	500.00	166.00	266.67	155.00
<b>2005 Average</b>	92.19	162.75	174.23	553.33	160.50	254.58	208.75

Table A Supplemental Calculations

**Quarterly Averages  
PMPA Material Impacts**

	Aluminum	Brass	Copper	Nickel	Stainless	Steel BDLS	Coke , China
<b>2006</b>	115.50	221.00	229.65	550.00	166.00	280.00	120.00
	122.25	229.00	233.65	550.00	166.00	275.00	148.00
	116.50	245.00	250.35	550.00	135.00	294.00	148.00
<b>1st Qtr.</b>	118.08	231.67	237.88	550.00	155.67	283.00	138.67
	130.60	320.00	348.30	700.00	135.00	294.00	138.00
	146.00	373.50	407.55	810.00	135.00	315.00	138.00
	120.00	345.00	369.10	810.00	135.00	342.00	140.00
<b>2nd Qtr.</b>	132.20	346.17	374.98	773.33	135.00	317.00	138.67
	121.50	357.00	382.95	910.00	135.00	342.00	140.00
	116.60	351.00	366.50	1150.00	135.00	342.00	125.00
	122.25	348.00	372.20	1150.00	135.00	285.00	125.00
<b>3rd Qtr.</b>	120.12	352.00	373.88	1070.00	135.00	323.00	130.00
	129.10	327.50	356.00	1050.00	245.00	275.00	164.50
	127.10	318.00	334.55	1050.00	245.00	245.00	164.50
	128.00	304.00	323.45	1150.00	243.00	230.00	150.00
<b>4th Qtr.</b>	128.07	316.50	338.00	1083.33	244.33	250.00	159.67
<b>2006 Average</b>	124.62	311.58	331.19	869.17	167.50	293.25	141.75
<b>2007</b>	128.50	266.00	265.15	1250.00	243.00	260.00	185.00
	130.00	281.00	285.25	1250.00	253.00	295.00	185.00
	125.50	306.50	314.35	1350.00	265.00	365.00	190.00
<b>1st Qtr.</b>	128.00	284.50	288.25	1283.33	253.67	306.67	186.67
	128.85	358.00	367.40	1350.00	287.00	365.00	185.00
	129.25	367.00	375.05	1350.00	335.00	335.00	190.00
	125.35	338.50	346.55	1350.00	335.00	295.00	245.00
<b>2nd Qtr.</b>	127.82	354.50	363.00	1350.00	319.00	331.67	206.67
	122.65	353.00	375.40	1350.00	342.80	295.00	260.00
	117.30	339.00	359.50	1250.00	342.80	305.00	250.00
	110.00	347.00	363.60	980.00	262.63	330.00	250.00
<b>3rd Qtr.</b>	116.65	346.33	366.17	1193.33	316.08	310.00	253.33
	113.25	359.00	374.95	980.00	235.04	330.00	360.00
	117.25	320.00	335.60	980.00	245.25	320.00	360.00
	110.00	303.00	315.50	980.00	245.25	335.00	277.00
<b>4th Qtr.</b>	113.50	327.33	342.02	980.00	241.85	328.33	332.33
<b>2007 Average</b>	121.49	328.17	339.86	1201.67	282.65	319.17	244.75

Table A Supplemental Calculations

**Quarterly Averages  
PMPA Material Impacts**

	<b>Aluminum</b>	<b>Brass</b>	<b>Copper</b>	<b>Nickel</b>	<b>Stainless</b>	<b>Steel BDLS</b>	<b>Coke , China</b>
<b>2008</b>	119.00	320.00	331.70	980.00	246.06	415.00	277.00
	139.75	374.00	386.35	980.00	246.06	415.00	365.30
	143.75	382.00	398.95	980.00	238.62	430.00	365.30
<b>1st Qtr.</b>	134.17	358.67	372.33	980.00	243.58	420.00	335.87
	140.00	389.00	402.80	980.00	244.09	600.00	389.40
	137.00	379.00	397.85	930.00	267.10	700.00	389.40
	146.30	373.00	389.55	840.00	267.10	785.00	389.00
<b>2nd Qtr.</b>	141.10	380.33	396.73	916.67	259.43	695.00	389.27
	150.00	378.00	407.75	840.00	264.47	890.00	875.00
	133.25	343.00	362.85	770.00	255.35	883.00	438.07
	123.75	322.00	342.95	770.00	243.21	853.00	438.07
<b>3rd Qtr.</b>	135.67	347.67	371.18	793.33	254.34	875.33	583.71
	110.25	274.00	285.70	660.00	223.94	570.00	232.00
	96.75	184.00	201.10	370.00	206.58	130.00	232.00
	79.85	152.00	160.35	300.00	206.58	235.00	197.50
<b>4th Qtr.</b>	95.62	203.33	215.72	443.33	212.37	311.67	220.50
<b>2008 Average</b>	126.64	322.50	338.99	783.33	242.43	575.50	382.34
<b>2009</b>	74.80	153.00	157.20	450.00	147.00	255.00	256.00
	67.75	156.00	162.25	450.00	124.00	255.00	270.80
	66.50	180.00	184.95	450.00	116.00	220.00	270.80
<b>1st Qtr.</b>	69.68	163.00	168.13	450.00	129.00	243.33	265.87
	70.00	216.00	220.35	370.00	116.00	195.00	236.93
	71.50	215.00	219.75	370.00	110.90	215.00	245.71
	77.25	237.00	243.80	370.00	118.00	225.00	241.22
<b>2nd Qtr.</b>	72.92	222.67	227.97	370.00	114.97	211.67	241.29
	84.00	251.00	261.65	470.00	140.00	301.67	250.24
	92.75	281.00	292.30	570.00	148.50	320.67	260.73
	88.75	282.00	293.45	570.00	166.50	340.00	249.01
<b>3rd Qtr.</b>	88.50	271.33	282.47	536.67	151.67	320.78	253.33
	94.48	275.00	302.65	570.00	166.50	340.00	390.00
	97.81	303.00	316.60	570.00	166.50	310.00	400.00
	107.62	312.00	332.75	570.00	161.50	345.00	410.00
<b>4th Qtr.</b>	99.97	296.67	317.33	570.00	164.83	331.67	400.00
<b>2009 Average</b>	82.77	238.42	248.98	481.67	140.12	276.86	290.12