



PMPA

Business Trends Report

September 2025

09/20/2025

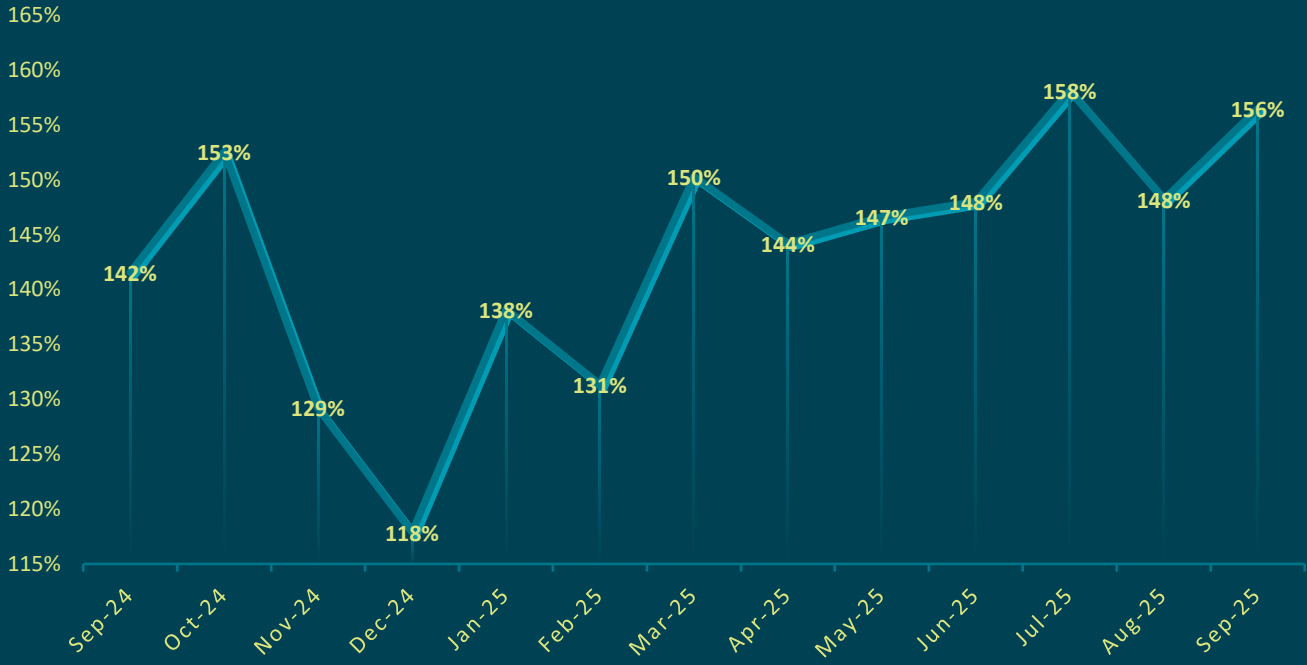
50 Respondents





September Respondents	September 2025 BT	Vs Last Month	Vs September Last Year	5 Year Average for	September % Diff 5yr Avg	All Time High for September
50	156%	5.57%	10.54%	148.13%	5.64%	171.05%

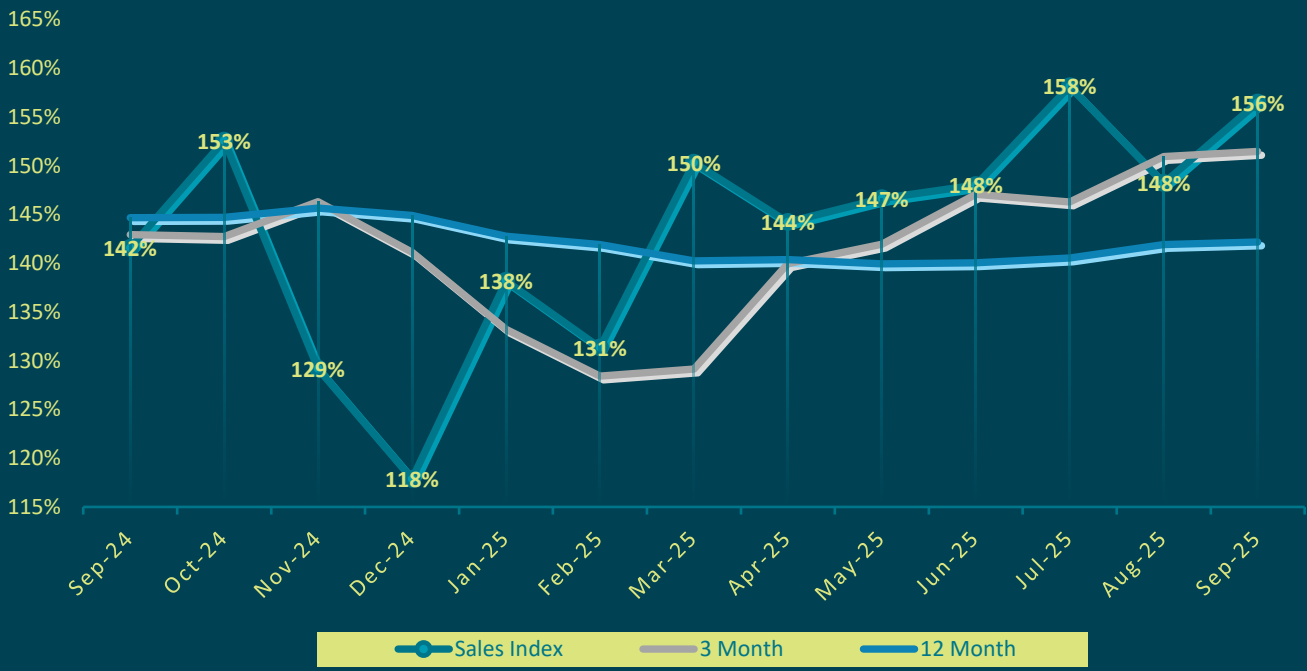
PMPA MEMBERS AVERAGE SALES INDEX



The business trends sales index grew by 5.57% in September

PMPA

12 MONTH MOVING AVERAGE SALES INDEX

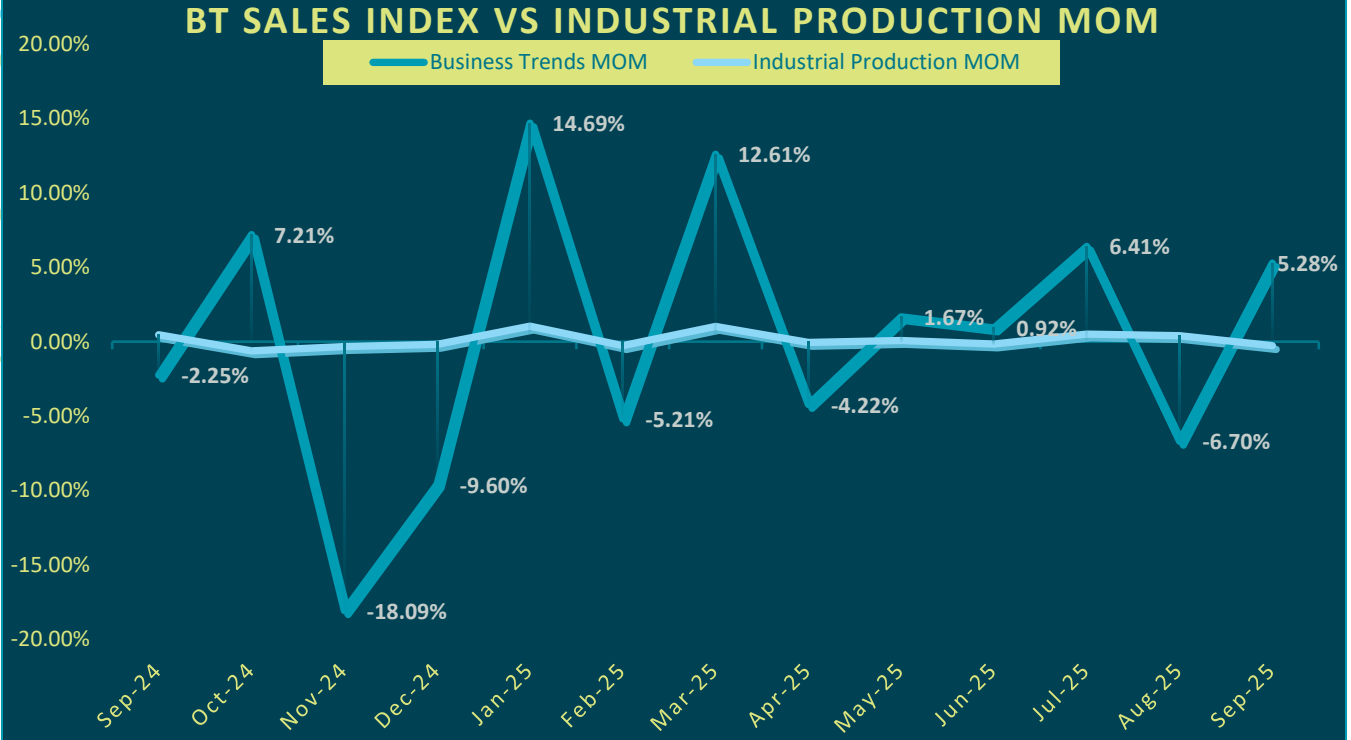


The 3 month average is currently 9 points above the 12 month in a flat trajectory



PMPA BT Sales Index Vs Industrial Production MOM

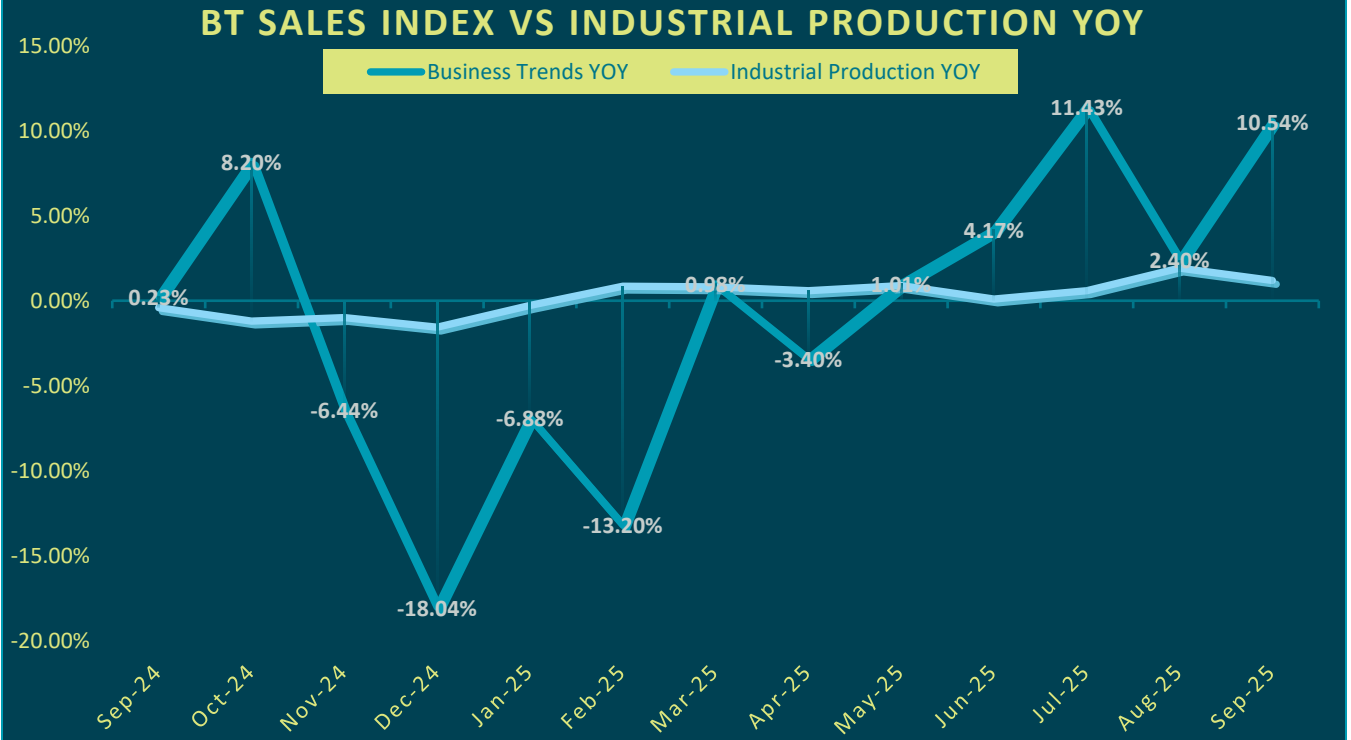
PMPA BT Index outperformed IP by 5.54%



PMPA BT Month over Month growth versus Fed Industrial Production MOM.

PMPA BT Sales Index Vs Industrial Production YOY

PMPA BT Index outperformed IP by 9.35%



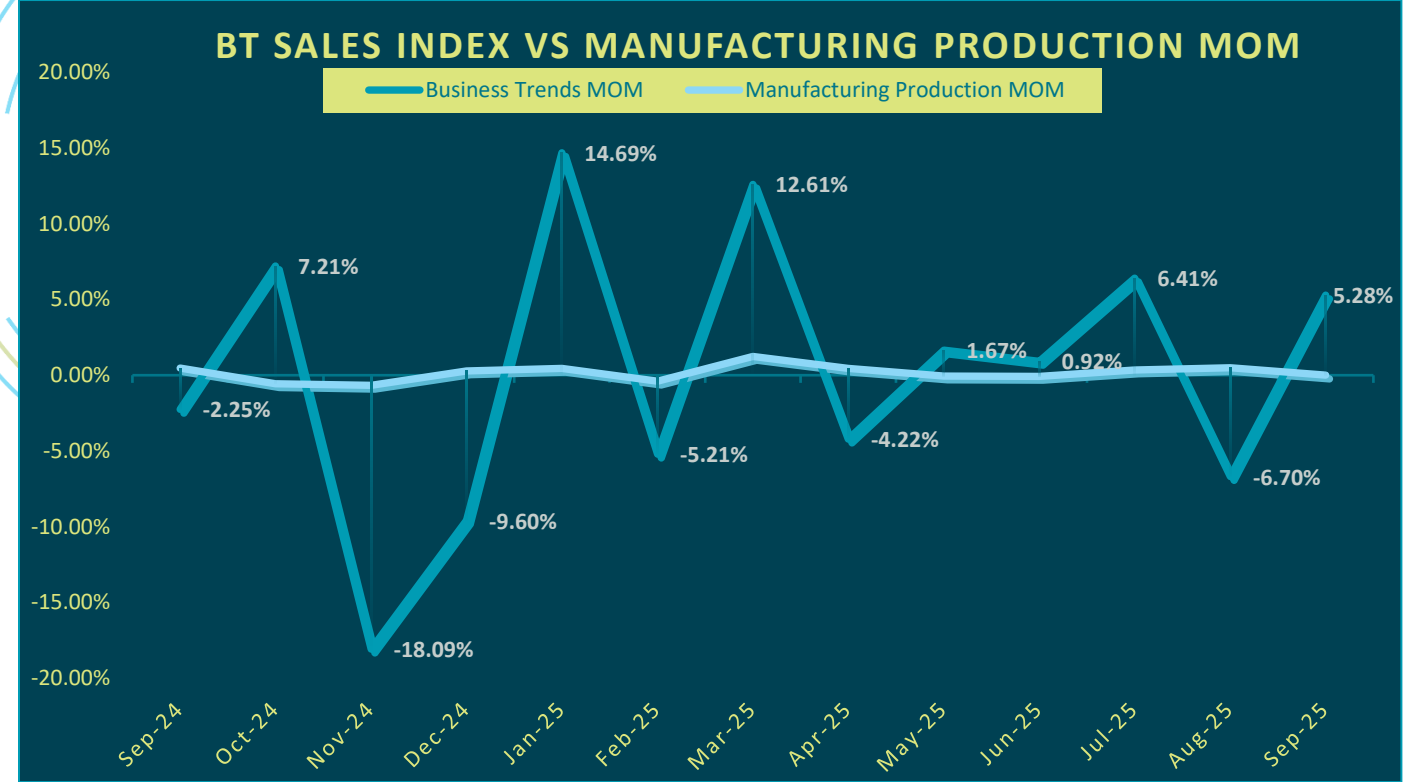
PMPA BT rolling Year over Year growth versus Fed Industrial Production YOY.



PMPA

BT Sales Index Vs Manufacturing Production MOM

PMPA BT Index outperformed Man Prod by 5.27%

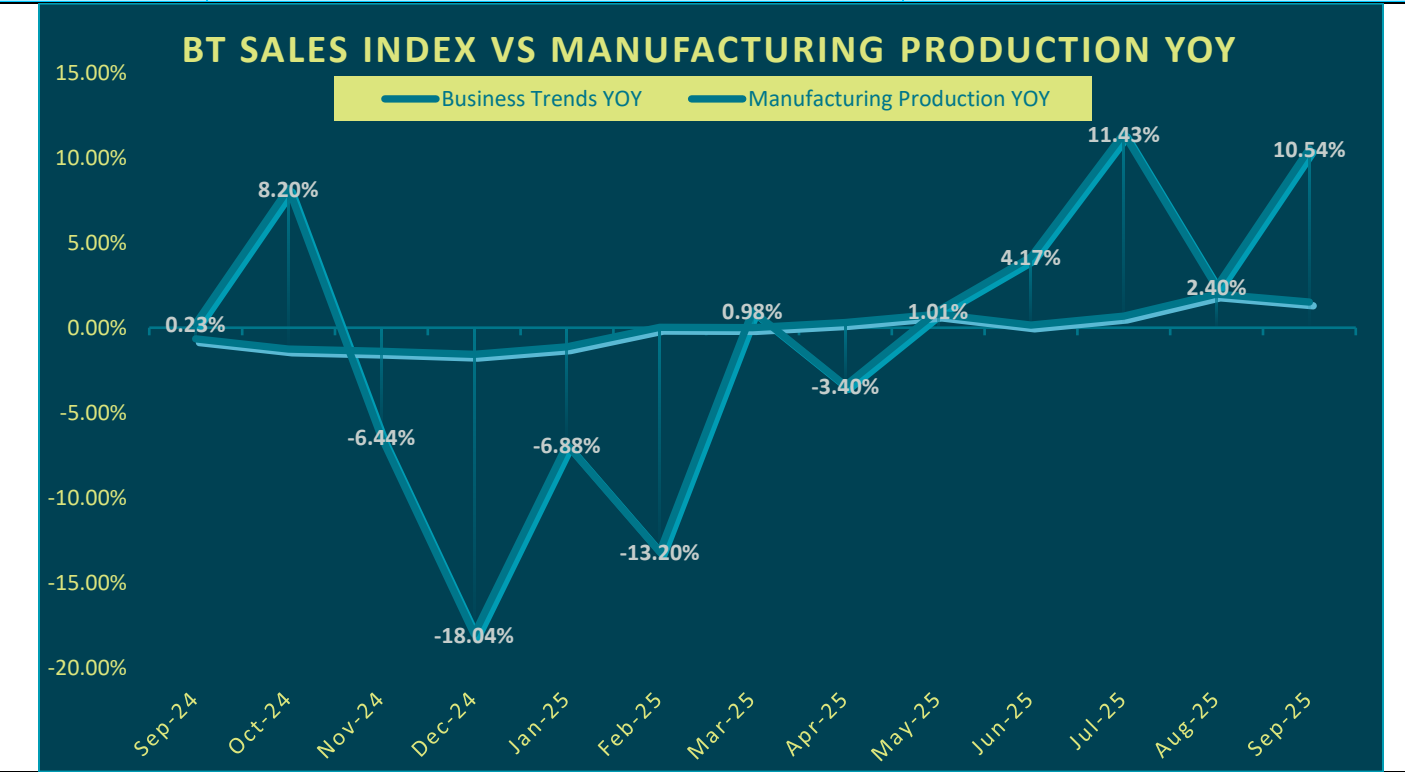


PMPA BT Month over Month growth versus Fed Manufacturing Production MOM.

PMPA

BT Sales Index Vs Manufacturing Production YOY

PMPA BT Index outperformed Man Prod by 9.02%

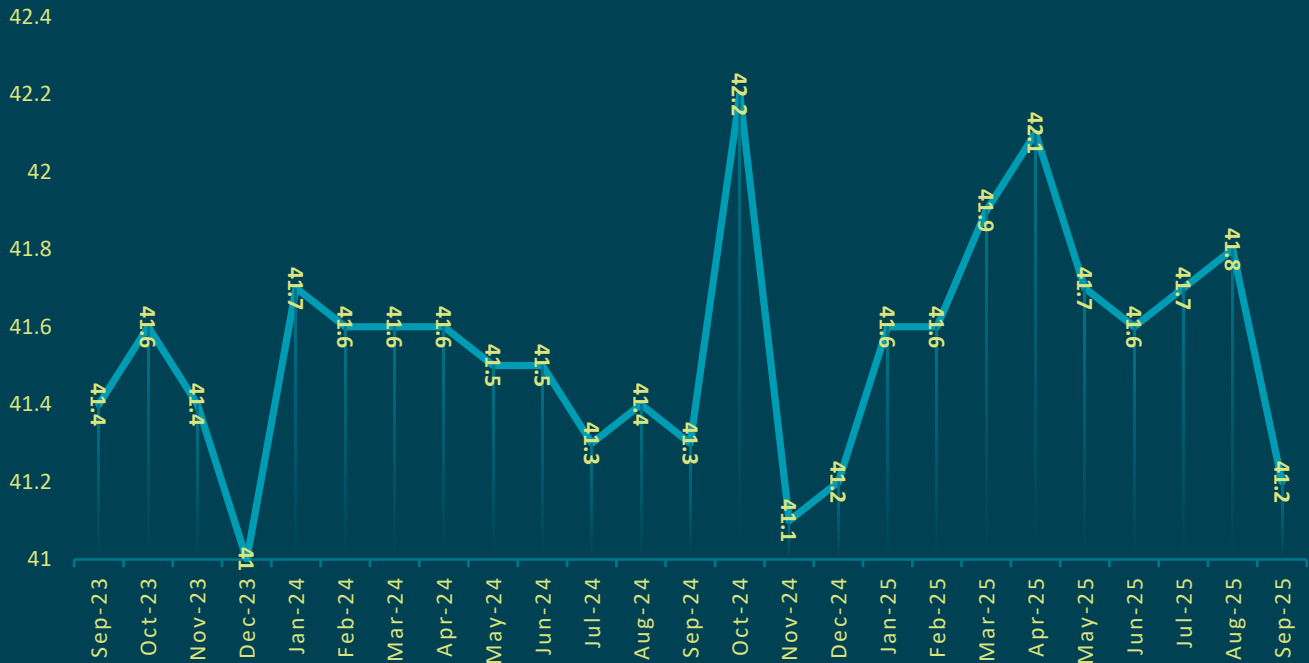


PMPA BT rolling Year over Year growth versus Fed Manufacturing Production YOY.



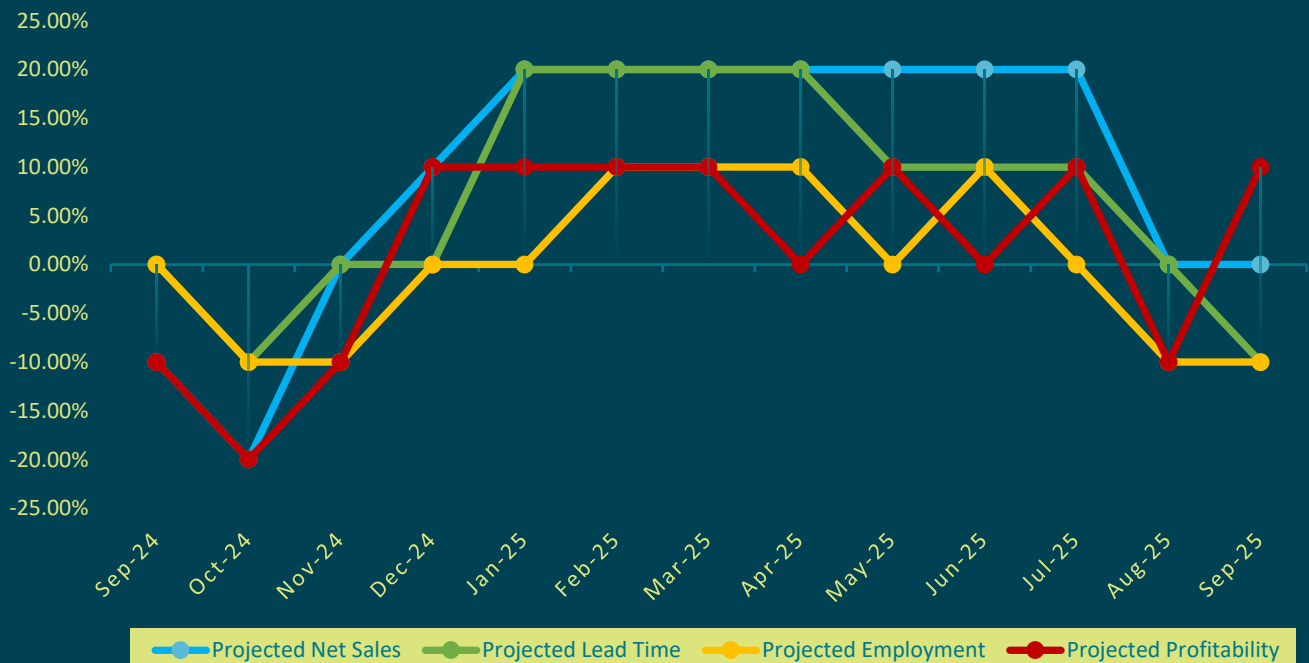
PMPA	< 40	40 Hrs	40 – 44	>=45	Shops Working OT	Total
Respondents	1 (1.92%)	29 (55.77%)	12 (23.08%)	11 (21.15%)	23 (44.23%)	52
Change MOM	-2 (-66.67%)	3 (11.54%)	-2 (-14.29%)	0 (0.00%)	-2 (-2.07%)	-2

PMPA MEMBERS AVERAGE 1ST SHIFT HOURS



PMPA	Projected Sales	Projected Lead Time	Projected Employment	Projected Profitability
Sentiment	0.00%	-10.00%	-10.00%	10.00%
Change MOM	0.00%	-10.00%	0.00%	20.00%

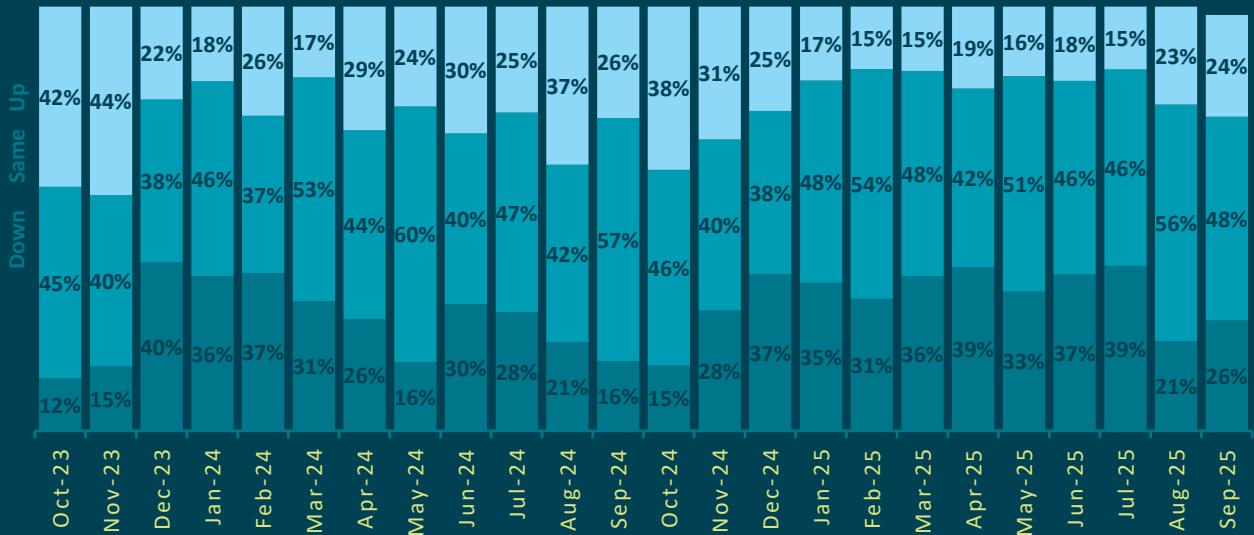
PMPA MEMBERS AVERAGE SENTIMENT





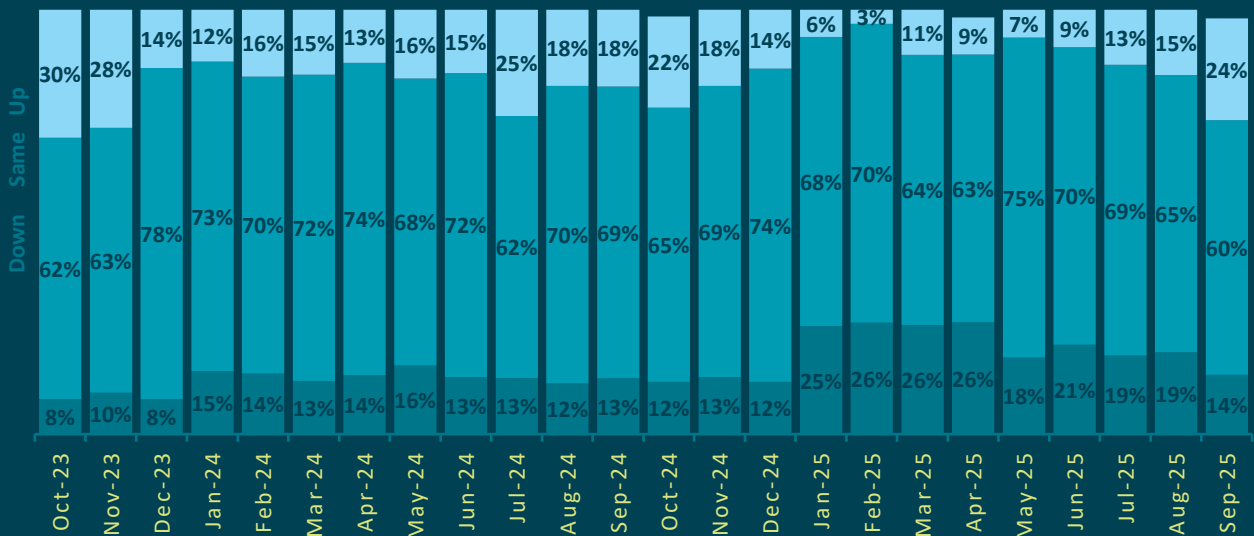
PMPA	UP	Same	Down	Total
Respondents	13 (26%)	24 (48%)	12 (24%)	50 (98%)
Change MOM	2 (18.18%)	-5 (-17.24%)	0 (0.00%)	-2 (-3.85%)

PMPA NET SALES SENTIMENT



PMPA	UP	Same	Down	Total
Respondents	7 (14%)	30 (60%)	12 (24%)	50 (98%)
Change MOM	-3 (-30.00%)	-4 (48%)	4 (50.00%)	-2 (-3.85%)

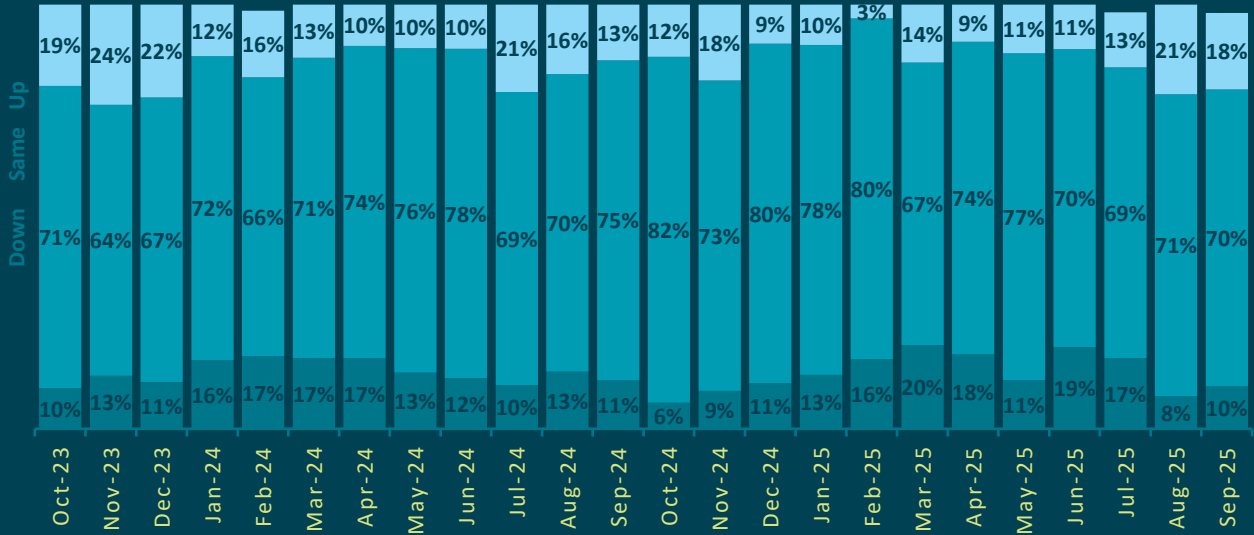
PMPA LEAD-TIME SENTIMENT





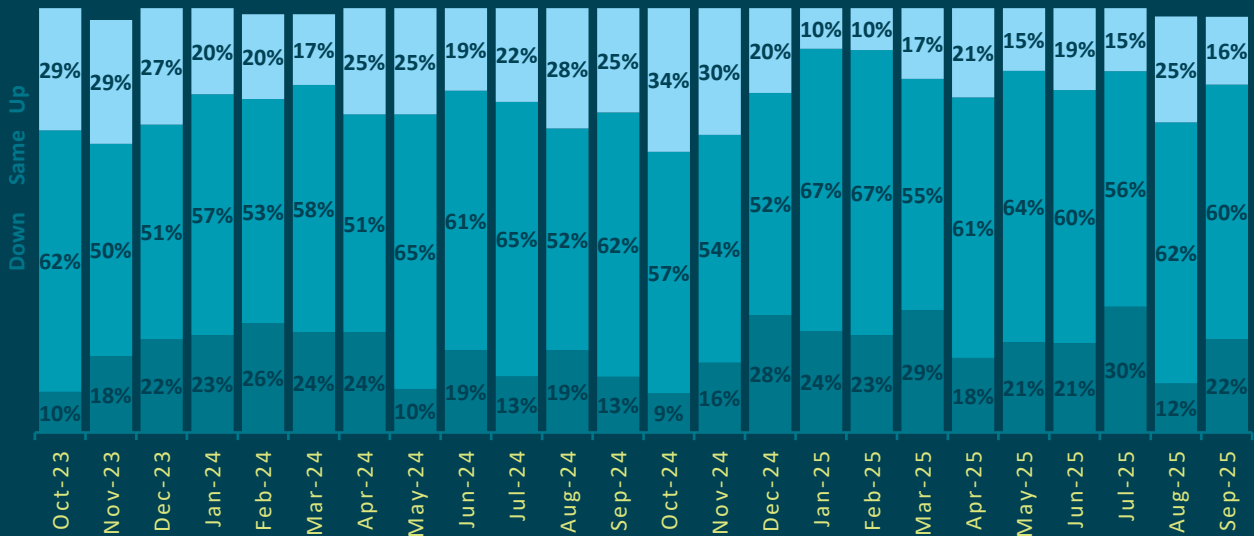
PMPA	UP	Same	Down	Total
Respondents	5 (10%)	35 (70%)	9 (18%)	50 (98%)
Change MOM	1 (25.00%)	-2 (-5.41%-17.24%)	-2 (-18.18%)	-2 (-3.85%)

PMPA EMPLOYMENT SENTIMENT



PMPA	UP	Same	Down	Total
Respondents	11 (22%)	30 (60%)	8 (16%)	50 (98%)
Change MOM	5 (83.33%)	-2 (-6.25%)	-5 (-38.46%)	-2 (-3.85%)

PMPA PROFIT SENTIMENT





INDEX OF SALES OF PRECISION MACHINED PRODUCTS

Industry Average	Jan	Feb	Mar	Apr	May	Jun	Jul	Aug	Sep	Oct	Nov	Dec	Avg
Base 2010	87	89	106	100	99	109	101	111	109	107	105	93	101
2021	129	130	152	136	129	148	134	149	157	149	144	138	141
2022	148	152	181	156	167	175	154	173	171	160	147	137	160
2023	155	138	169	140	150	155	127	147	141	141	138	144	145
2024	148	151	149	149	145	142	142	145	142	153	129	118	143
2025	138	131	150	144	147	148	158	148	156				147
% Yr Ago	93%	87%	101%	97%	101%	104%	111%	102%	111%				
YTD	93%	90%	94%	94%	96%	97%	99%	99%	101%				